



Mali

0 M - <48 M

Max 22 kg*



MAXI-COSI®

We carry the future

These instructions detail the safe use, assembly and maintenance of your product. Please read these instructions carefully and ensure that they are followed at all times. Failure to do so could result in serious injury or death.



WARNING



TO AVOID INJURY OR DEATH:

- **PUT ON ALL THE BRAKES WHENEVER YOU PARK THE STROLLER.**
- **FOLLOW THE MANUFACTURER'S INSTRUCTIONS.**
- **DO NOT LEAVE CHILDREN UNATTENDED.**
- **SECURE THE CHILD IN THE HARNESS AT ALL TIMES AND ENSURE THAT THE SAFETY HARNESS IS ADJUSTED FIRMLY BUT COMFORTABLY TO THE CHILD'S BODY.**
- **DO NOT CARRY EXTRA CHILDREN OR BAGS ON THIS STROLLER.**
- **DO NOT USE FOR UNSUPERVISED SLEEPING**



WARNING



- **ENSURE THAT ALL LOCKING DEVICES ARE ENGAGED BEFORE USE.**
- **MAKE SURE CHILDREN ARE CLEAR OF ANY MOVING PARTS IF YOU ADJUST THE STROLLER, OTHERWISE THEY MAY BE INJURED.**
- **TO AVOID INJURY ENSURE THAT YOUR CHILD IS KEPT AWAY WHEN FOLDING AND UNFOLDING THE STROLLER.**

Never leave safety harness connected when not fitted to a child in the stroller, as this may create loops that cause a strangulation hazard.

Never leave a child in the stroller when ascending or descending stairs or escalators, or when travelling on others forms of transport.

Use the tether strap to prevent the stroller rolling away.

Do not allow children to stand on the seat or footrest.

Do not attempt to lift the stroller by the bumper bar.

Engage front wheel swivel locks when travelling on rough or uneven surfaces.

Regularly inspect all parts and locking devices, promptly replace worn out or broken parts.



WARNING



Use only those accessories which are supplied by Dorel Australia and approved for use with this stroller.

To prevent the risk of the stroller catching fire, do not park it near an open fire, heater or barbecue.

Fingers or parts of the body could be injured when the stroller is being folded or unfolded. Please use caution when folding or unfolding the stroller.

This stroller has been designed for use on flat or gently sloped surfaces. Using this stroller on uneven or higher sloped surface may cause the stroller to become unstable and tip over.

Do not run or jog with this stroller.

The weight of the child using this stroller should not be more than **22kg** (approximately 4 years of age). Shopping basket capacity should not be more than **9kg**.

Do not use this bassinet once the child can sit up unaided.

Bassinet cannot stand alone.

Do not use the bassinet or stroller as an unsupervised sleeping environment, for prolonged or overnight sleep.

Ensure that the storage latch is engaged when lifting or carrying the folded stroller.

Index



6



25



49



7



36



13



42



18



42



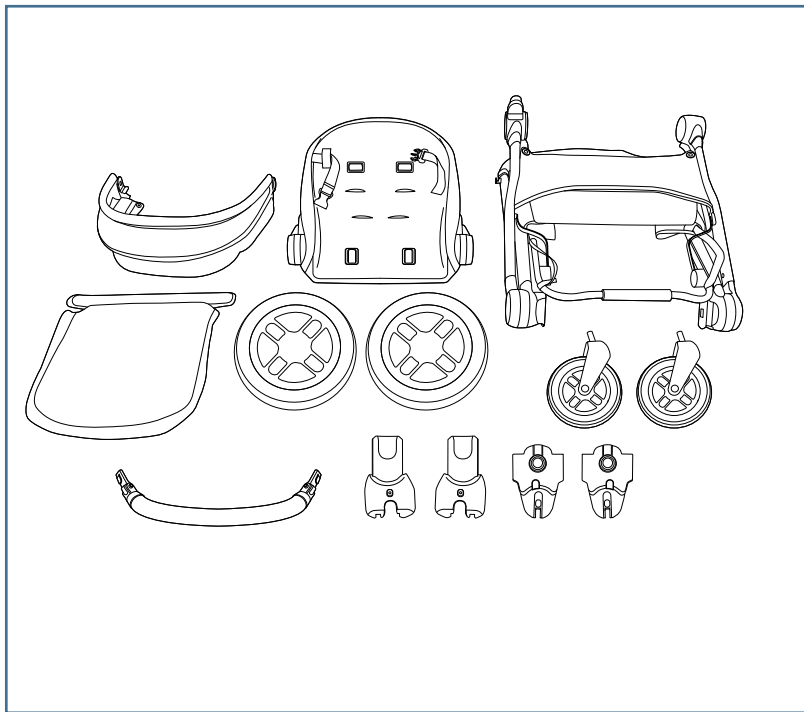
21



43

Please note

All line drawings featured are solely for illustrative purposes.

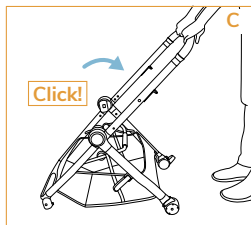
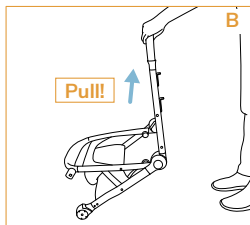
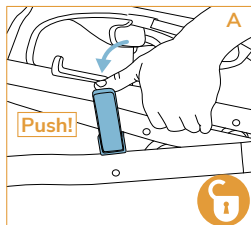
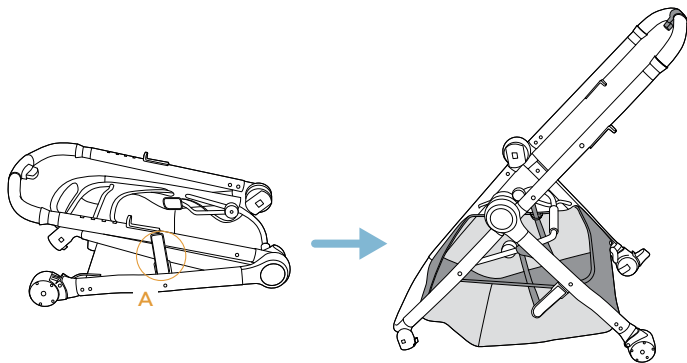




Assembling

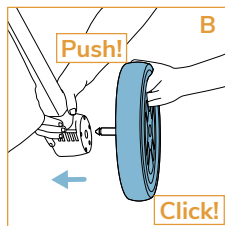
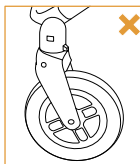
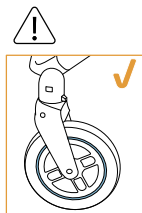
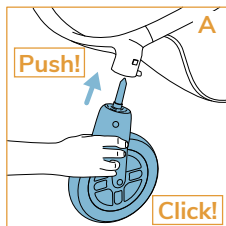
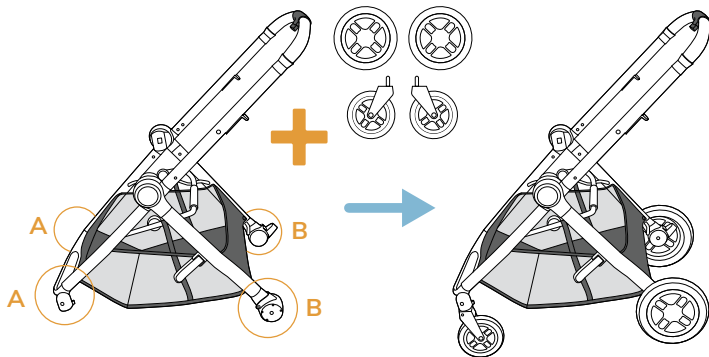


1



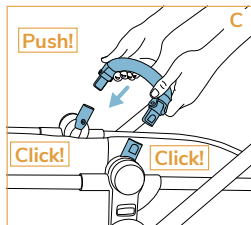
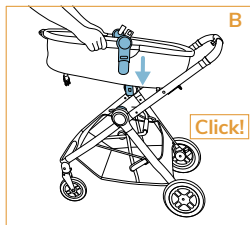
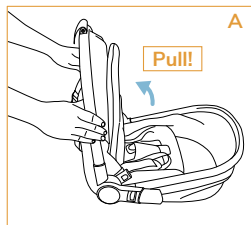
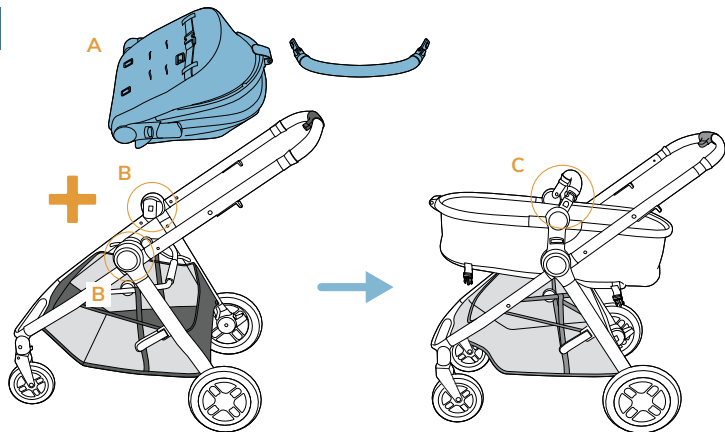


2



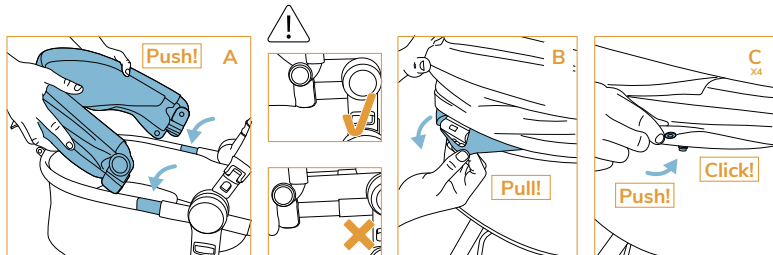
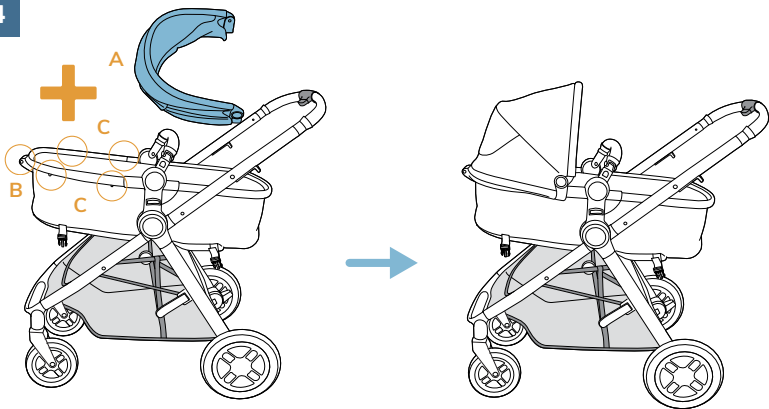


3



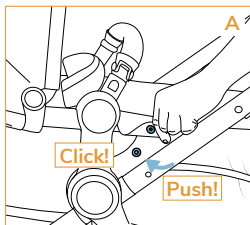
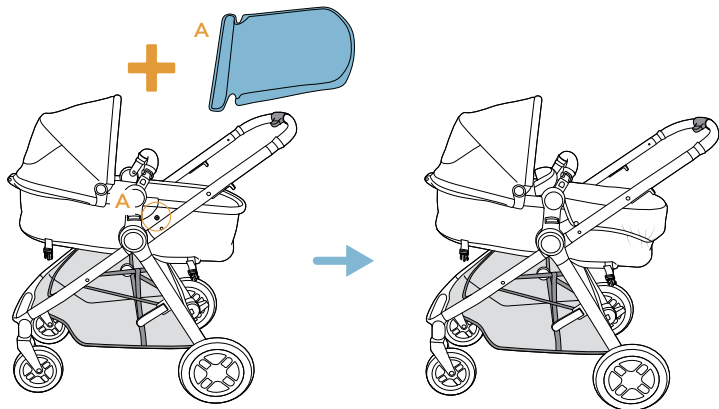


4





5

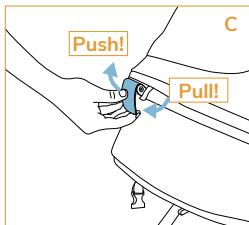
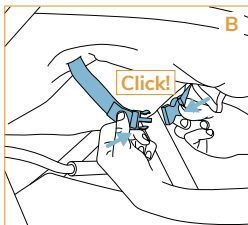
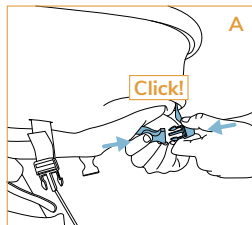
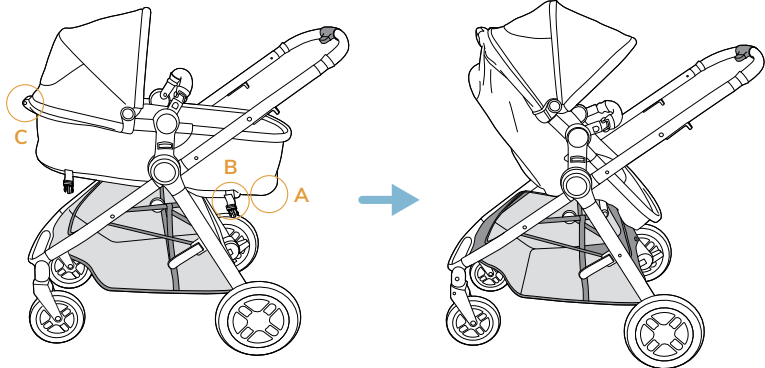


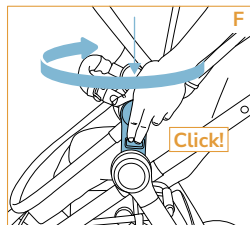
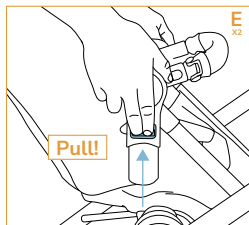
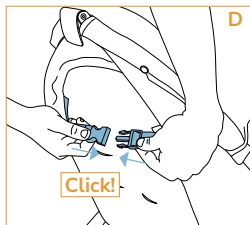
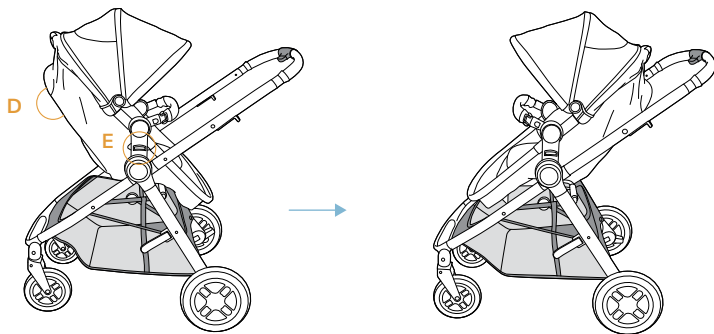


Folding



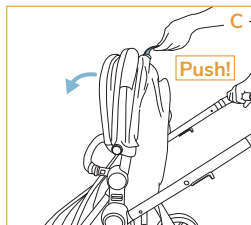
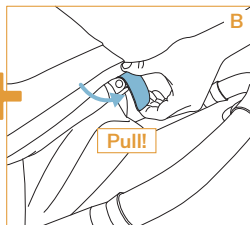
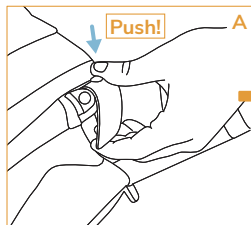
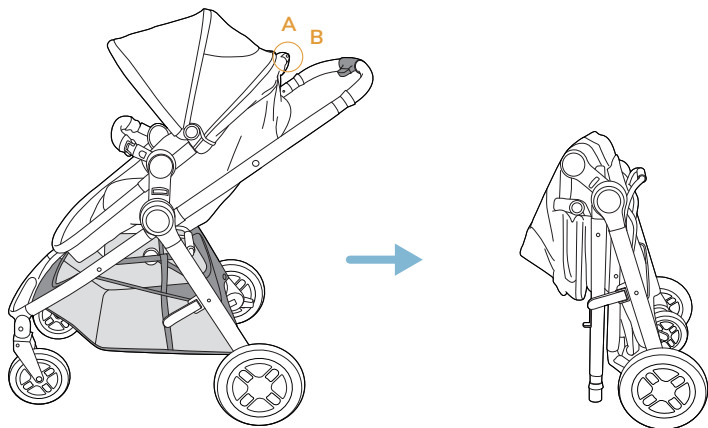
1

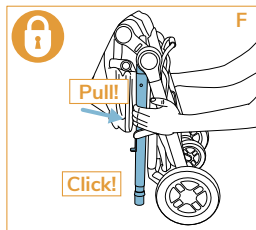
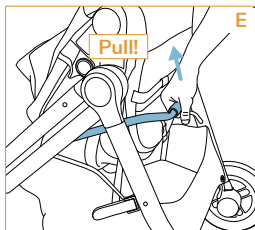
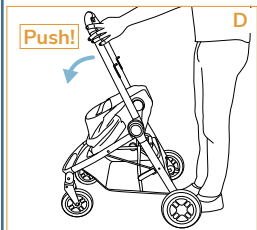
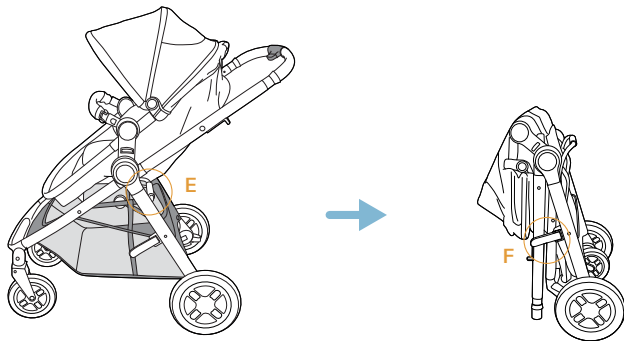






2



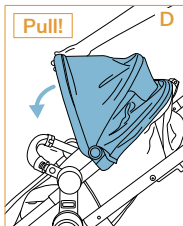
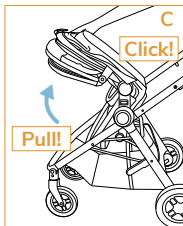
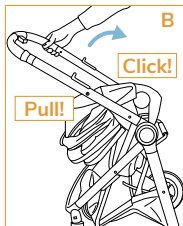
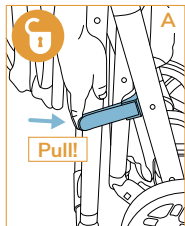
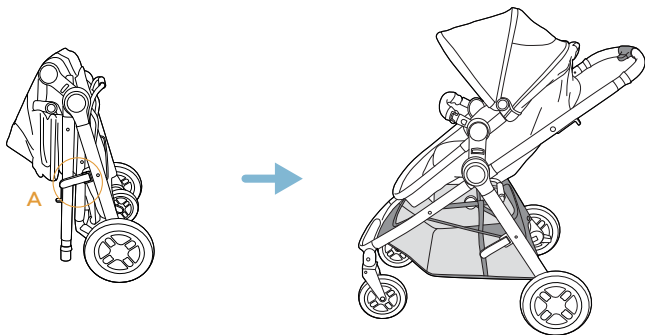




Unfolding

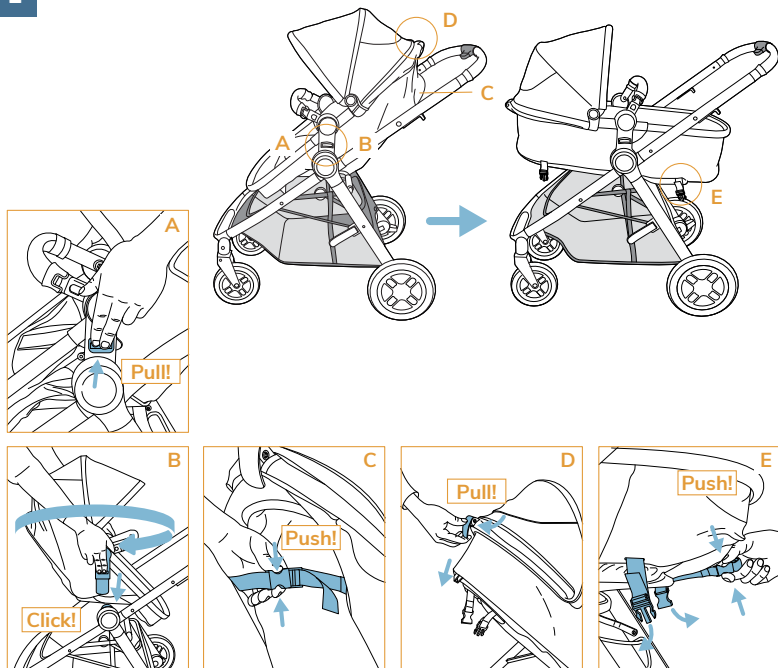


1





2

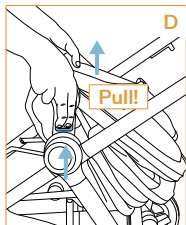
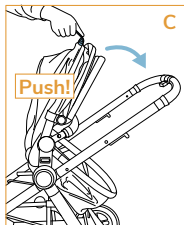
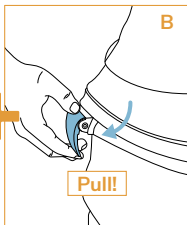
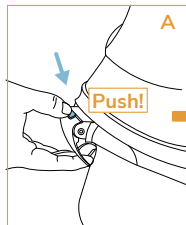
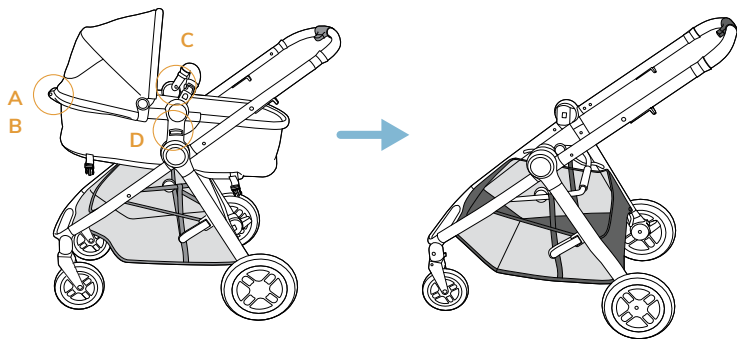




Compact folding

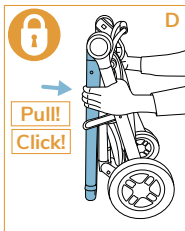
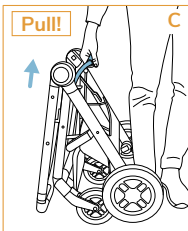
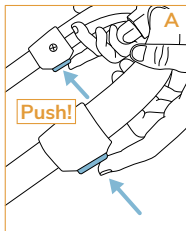
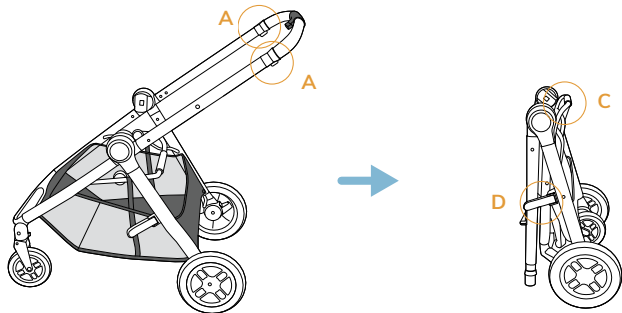


1



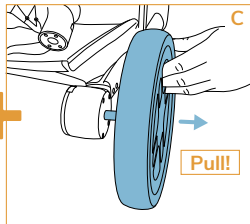
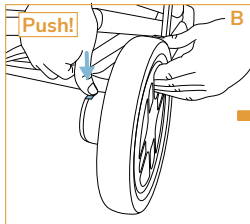
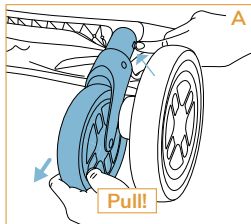
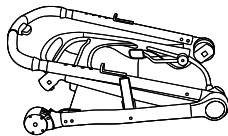
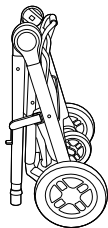


2





3

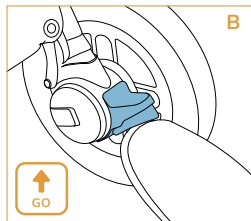
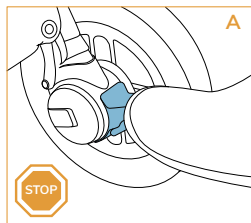
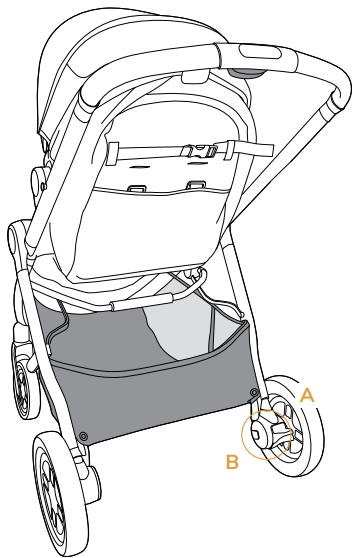




Use

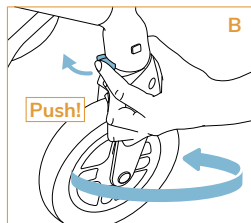
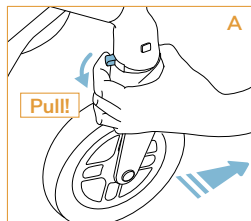


1



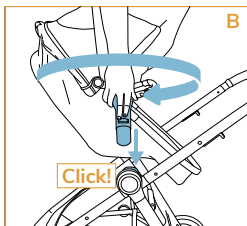
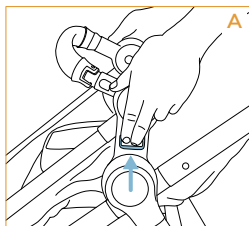
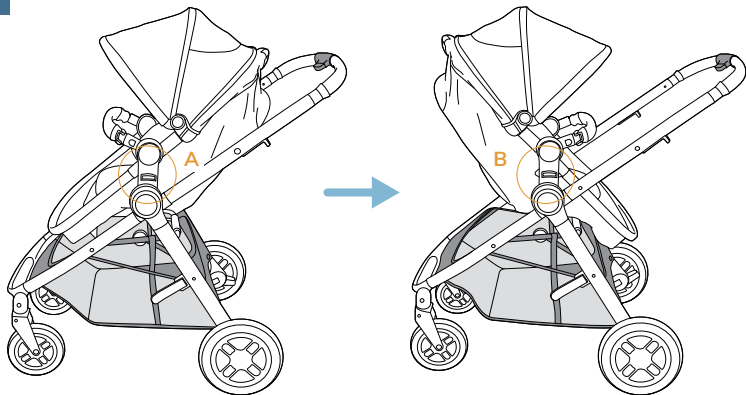


2



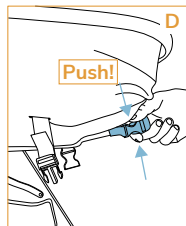
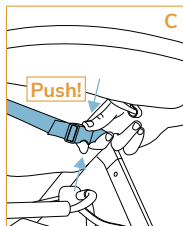
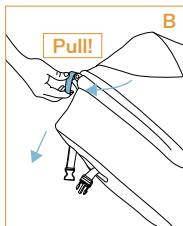
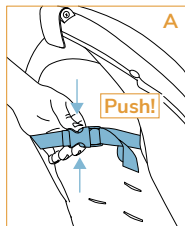
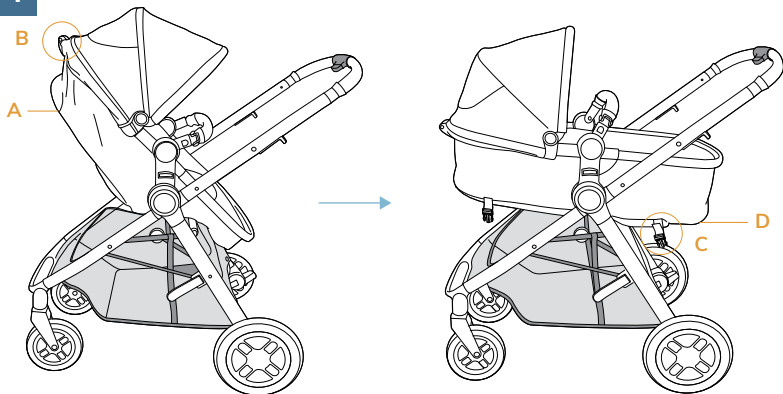


3



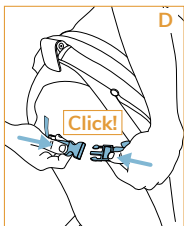
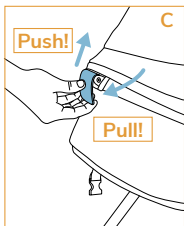
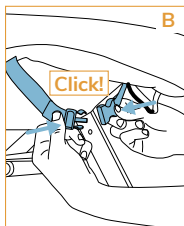
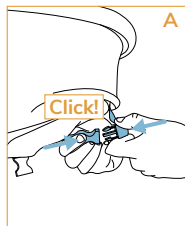
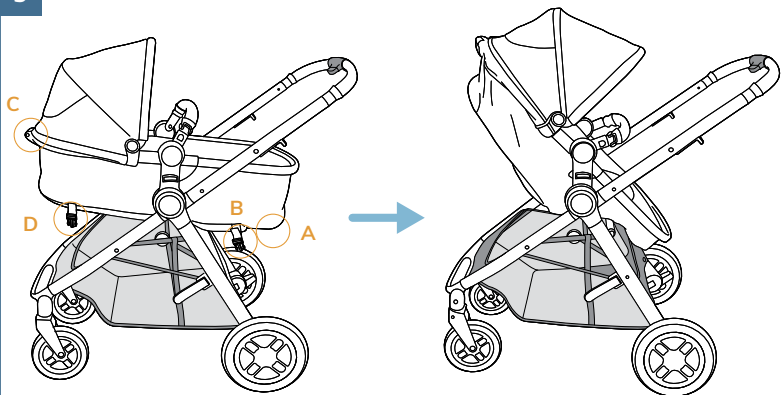


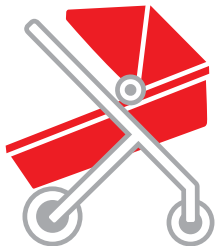
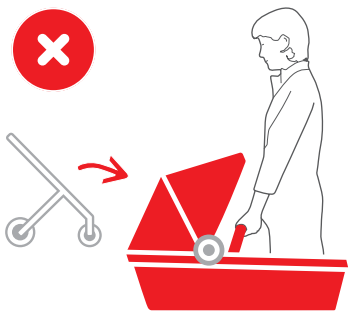
4





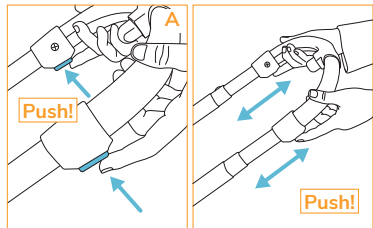
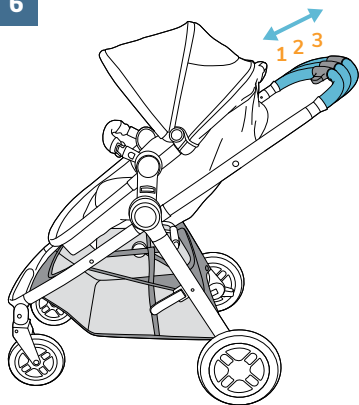
5



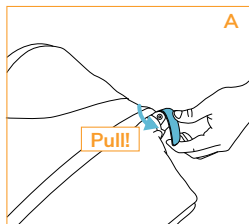
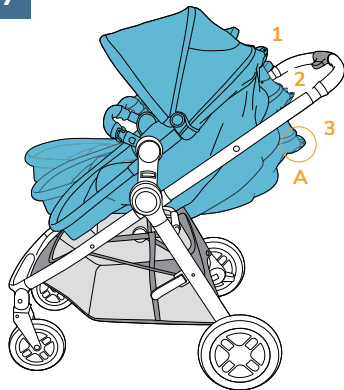




6

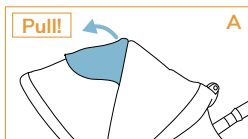


7

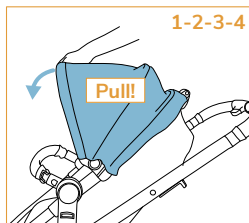




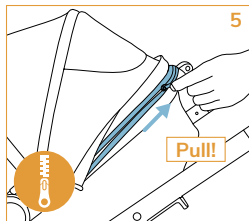
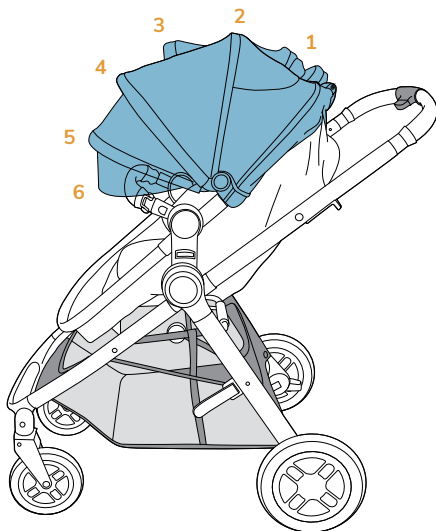
8



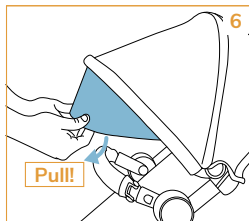
A



1-2-3-4



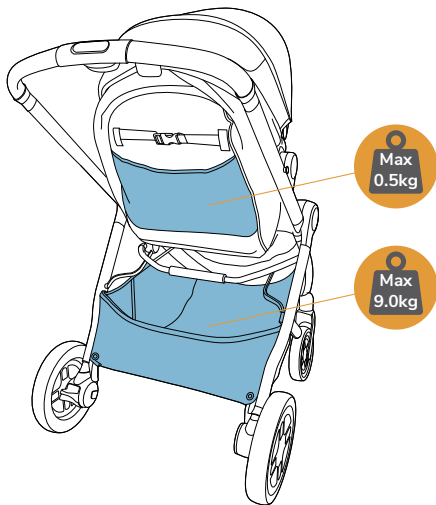
5

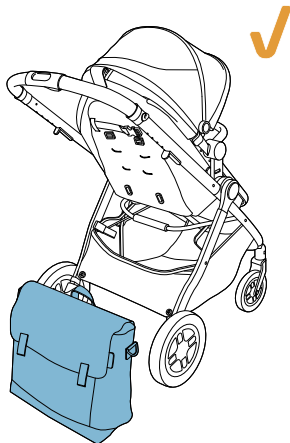


6



9





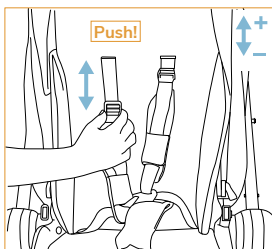
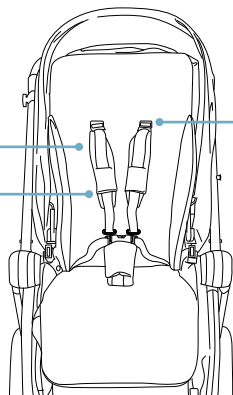


Child installation



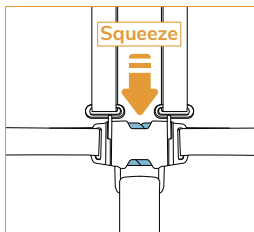
1

0 M - <48 M Max 22 kg*

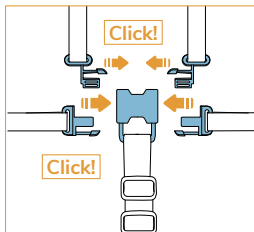




2



3



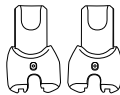
WARNING



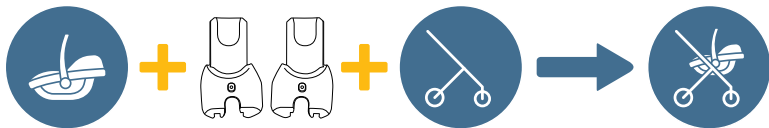
USE THIS HARNESS AT ALL TIMES. WHEN NOT IN USE, DISCONNECT THE SHOULDER STRAPS FROM THE WAIST STRAP AND BUCKLE.



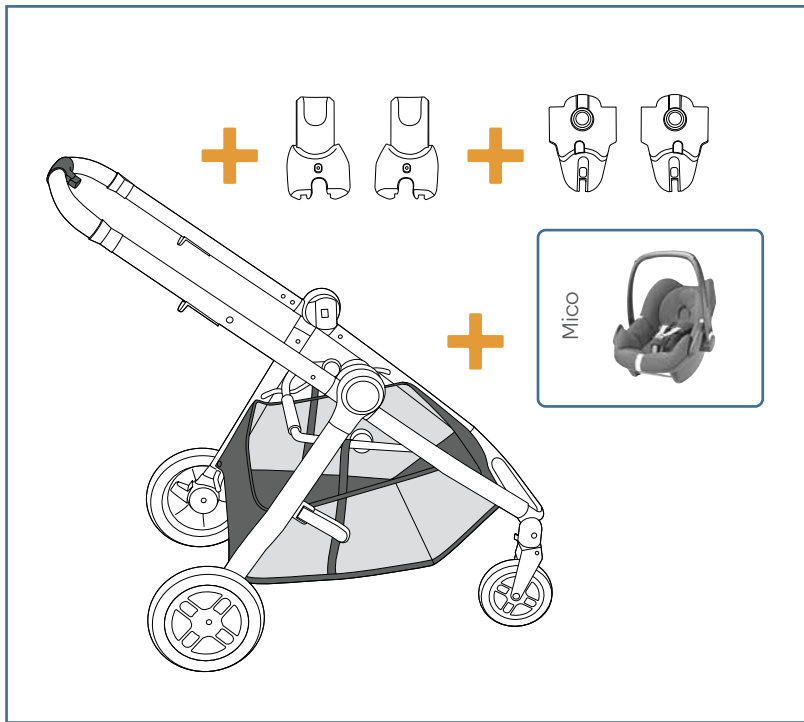
Stroller + car seat

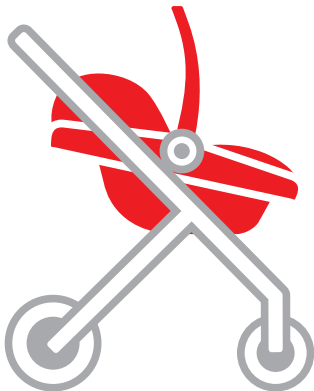


Mico
Capsules



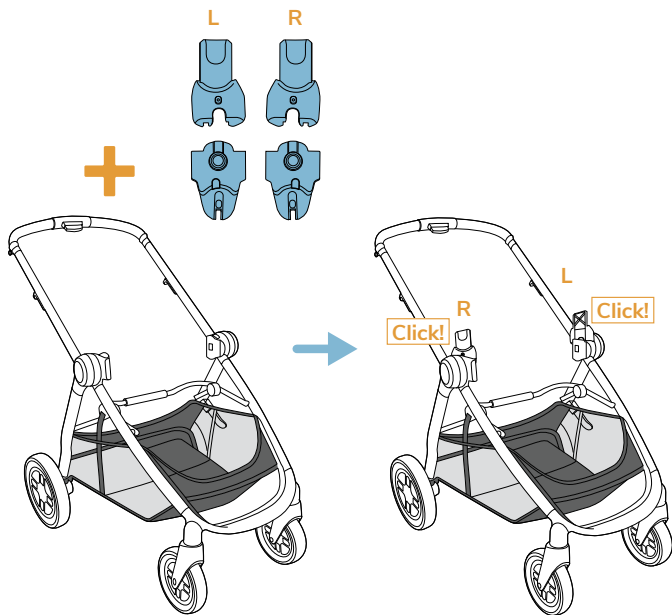
For up-to-date unique compatibilities please check online - Do not use other products





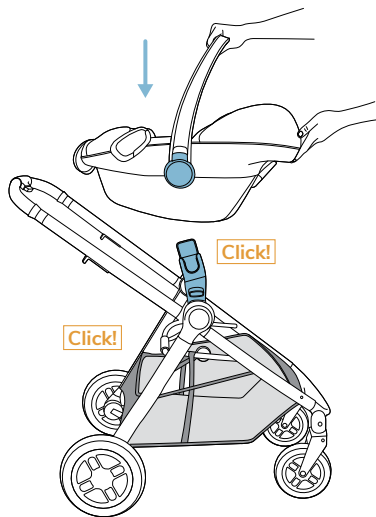


1

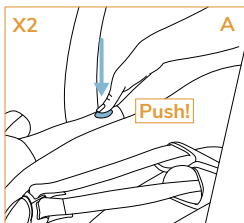
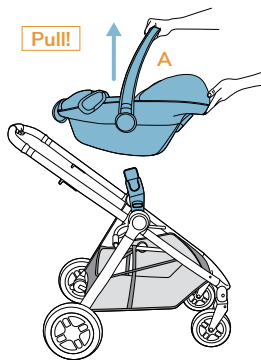




2

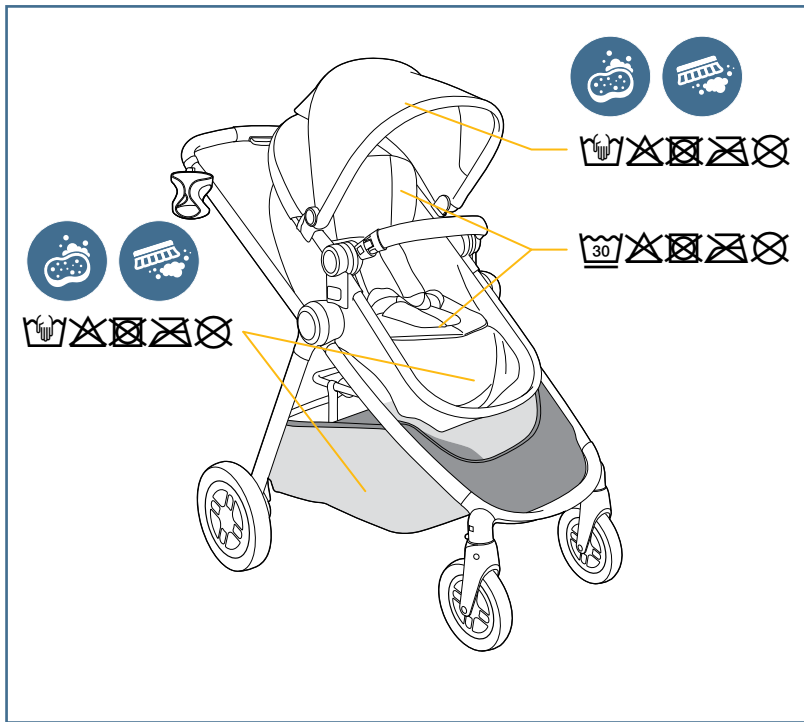


3





Washing





Care and Maintenance

Always store in a clean and dry place.

Clean the frame by wiping with a damp cloth.

Do not use abrasives, bleach or strong detergents.

Spot clean fabrics with warm water and mild soap.

Ensure fabric is dry before storing.

Occasionally clean and lubricate wheels and axles with a light lubricating oil.

Regularly check for loose parts and tighten when required.

Damaged or broken parts should be immediately replaced.



DOREL AUSTRALIA PTY LTD

Warehouse 2, 30 Taras Avenue,
Altona North, VIC 3025

Hours: 8:30am - 5:00pm Mon-Fri

Email: customerservice@dorel.com.au

Phone: 1300 809 526

DOREL NEW ZEALAND LTD

14 Sir William Avenue
East Tamaki Auckland 2013

Hours: 8:00am - 5:00pm Mon-Fri

Email: customerservice@dorel.co.nz

Phone: 0800 628 000 (toll free)

Specifications are subject to change without notice.
Copy or reproduction without permission is prohibited
© 2020 Dorel Australia Pty Ltd
05/2023

All Rights Reserved



maxi-cosi.com.au